

ood * home * looks * creative ideas * health

prima

March 2004 ONLY £2.10

1001
tricks, tips
& clever
ideas

7-page special

Stress busters

Put the bounce
back into
your life today

NEW
Spring styles
to make you
look slimmer



10 plants
every
garden
should have

Creative ideas

* make Mum's
day * simply



How to add
value to
your home
what's worth
doing, what's not

Miracle Diet
Get younger,
glowing skin
in just 3 days

'IN AN INSTANT,
MY MOTHER'S DAY
DREAM WAS
SHATTERED'

How to...

- * do a French manicure
- * brighten a dark room

Delicious
one pot



7 days to a stress-free you

Find out if you're coping, skating on thin ice or rushing headlong into a life crisis



How stressed are you?

- you can't concentrate
- you can't listen attentively
- you talk too much - or too little
- you have unpaid bills
- you're drinking or smoking more than usual
- you're eating badly
- you can't sort priorities
- you have unpredictable outbursts of temper
- you're clumsy
- you look untidy
- you have less energy than you'd like
- you have difficulty making decisions
- you plan your time badly, ending up with a tight schedule
- you hate to delegate
- you have no time for hobbies or socialising
- you're forgetful
- you don't get round to exercising
- you're not completing tasks
- you sleep badly
- you get frustrated by small delays

Some of us are more prone to stress than others. 'High neuroses' types have a tendency to try to force a quart into a pint pot - even though they also react more acutely to stressful situations than 'low neuroses' types. The more of the following symptoms you suffer, the more stressed you are likely to be, says stress expert Dr Malcolm VandenBurg.

For each of the above symptoms, score **1** for **never**, **2** for **occasionally**, **3** for **frequently** or **4** for **consistently**

5 signs that you're stressed

YOU HAVE A HEADACHE

A pounding head is more likely if you're under stress because your blood will be beating around your system faster and your muscles will be tense.

YOU HAVE SPOTS

Acne's another sign you need to slow down. The Acne Support Group found that 57 per cent of sufferers had a break-out when they were under stress.

YOUR SKIN'S ITCHY

Eczema is often linked to stress because skin is very sensitive to the changes in hormone levels that stress brings about.

YOU KEEP GETTING COLDS

Recurrent infections are more likely because stress hormones suppress your immune system.

YOUR BACK'S HURTING

Back pain is caused by the muscles contracting under stress, as your body thinks it's getting ready for fight or flight.

How I cope

When a colleague is getting up my nose, instead of arguing with them, I just nod and smile, while secretly imagining them on the toilet.

MAGGIE GALE, 40, from Leamington Spa, Warks, is a professor of drama and mother of two young sons

How I cope

When I'm confronted by passengers shouting about my bus being late, I agree with them to diffuse the situation. Then when I'm home, I reward myself with a glass of wine in the bath.

SANDRA BOUCHERE, 57, from Mitcham, Surrey, is a bus driver

IF YOU SCORED 20-35:

Your almost complete lack of stress is a sign that you aren't pushing yourself as hard as you could. You're opting for an easy life, and there's plenty of room for you to work harder at the things you enjoy, or find more things to work at. A little positive stress is not a bad thing!

IF YOU SCORED 36-40:

You're pushing yourself into your comfort zone, using pressure to help yourself work harder, and enjoying the benefits that moderate stress brings: a sense of achievement, happiness, and the possibility of promotion at work.

IF YOU SCORED 41-55:

Your soaring stress level is a sign that you're seeking out too much pressure. You need to recognise that you're taking on too much and that you're responding in an adverse way. Cut out any unnecessary pressures so that you can do the things that matter without feeling so bad.

IF YOU SCORED 56-80:

You've got yourself into a position where you are far too stressed. You're taking on too much and have to start saying no to yourself and others. Get some professional help with this. For more information, visit www.positiveunderpressure.com.



Under pressure

Could your busy life be damaging your health? We asked three women to monitor their blood pressure and heart rate as they went about their daily routines



Freida can cope with a difficult customer... but a truculent four-year-old child?

THE BUSY MUM

FREIDA WASHINGTON, 43, from Surbiton, Surrey, is divorced and has two children, Rianna, seven, and Harry, four. 'I used to run my own deli business, working 12 hours a day because I was so busy. That may sound stressful, but it gave me a real buzz. The pressure today – as a single mum of two children – seems worse.'

6.30am Wake up. Blood pressure (BP): 116/62. Heart rate (HR): 61. A few minutes'

peace before washing, dressing and grabbing my first cup of coffee. I prepare the children's school bags and lunches.

7am Get kids up, give them breakfast, wash and dress them – with no co-operation. Rianna gets cross as I try to brush her thick, knotty curls. **BP: 119/68 HR: 69.**

7.25am We're going to be late if the kids don't hurry, but they're glued to breakfast TV and I'm getting very agitated. **BP: 124/73 HR: 79.**

7.40am **BP: 125/76 HR: 94.** Out of the house on time – amazing! But the traffic is awful and I'm anxious knowing Rianna's friend is waiting to be picked up. They have to be in school at 8.20am, and at 8.15am I park badly, feeling stressed about a nearby traffic warden. See the girls off and go to Harry's school.

9.15am At the supermarket (**BP: 137/77 HR: 86**) then

What's normal, what's not

WHAT DOES A BLOOD PRESSURE READING MEAN?

Your blood pressure reading will usually be written down as a fraction, such as 120/90, which translates as a systolic pressure of 120mmHg and a diastolic pressure of 90mmHg. Clear as mud? Here's the translation: systolic pressure is the maximum that the heart achieves at each beat, and diastolic pressure is the low point of pressure in the body's blood vessels that occurs just before the heart contracts again in its next beat.

WHAT'S NORMAL? Healthy adults have a systolic pressure reading below 135mmHg and a diastolic

pressure reading below 85mmHg.

WHAT'S NOT? People with systolic blood pressure consistently above 160mmHg and those with diastolic pressure above 100mmHg need treatment.

WHAT CAUSES HIGH BLOOD PRESSURE? As you get older, your blood pressure has a tendency to rise due to an increased intake of salt and weight gain. High blood pressure, or hypertension, is also caused by smoking, alcohol, stress, low potassium intake and raised cholesterol.

WHAT ARE THE RISKS? A stroke is one of the most serious consequences of untreated high blood pressure, followed by angina and heart attack.

How I cope

Much of my stress comes from wondering if I'm good enough. I counteract this by reminding myself of my worth. Dancing to '70s music is a great relaxer, too!

DR ROSEMARY ANDERSON, 47, from Beaconsfield, Bucks, is the chair of The International Stress Management Association

How I cope

When things pile up, I list them all and tackle the most important stuff first. Then I work off stress by gardening.

SUSANNE MAYNARD, 49, a physiotherapist from Hauxton, Cambridge

go home to start preparing dinner, as I'll have no time later. I tidy round, make the beds and put on the washing. My back aches as I sit down to make phone calls concerning my divorce and a dental negligence claim. Prepare Harry's football kit, two swimming bags and two afternoon snacks for the kids, then load up the car.

12pm Collect Harry. Feel stressed while parking for errands at the bank and post office, as Harry doesn't want to get out of the car.
BP: 130/74 HR: 81.

12.30pm Arrive just in time for Harry's football lesson.
BP: 131/82 HR: 90.

1.30pm Take Harry for lunch.
BP: 132/84 HR: 85.

3pm Arrive at Rianna's school.
BP: 131/88 HR: 87. Take children to swimming club.

6pm Arrive home after bad journey with the kids bickering. (**BP: 128/79 HR: 92**). Serve up dinner. Rianna doesn't like it, and I can feel my patience running out. Try to do Rianna's homework with her, but Harry is being loud and messy. The kids start fighting, and I'm fed up with repeating myself.

8.15pm The kids are finally in bed, but they share a room and Harry is annoying Rianna. I end up shouting at him and he starts to cry. I sit down with a coffee and cigarette. **BP: 124/80 HR: 94.**

9pm Peace at last, but my mind's turning somersaults

thinking about how hard it is to be a single parent. Feel like I've got to be a mum and a dad to my young pair. Long to have my career back, but I will always put the kids' needs first – and mine last.
BP: 128/79 HR: 95.

12.30am Flop into bed, worn out. **BP: 124/67 HR: 80.**

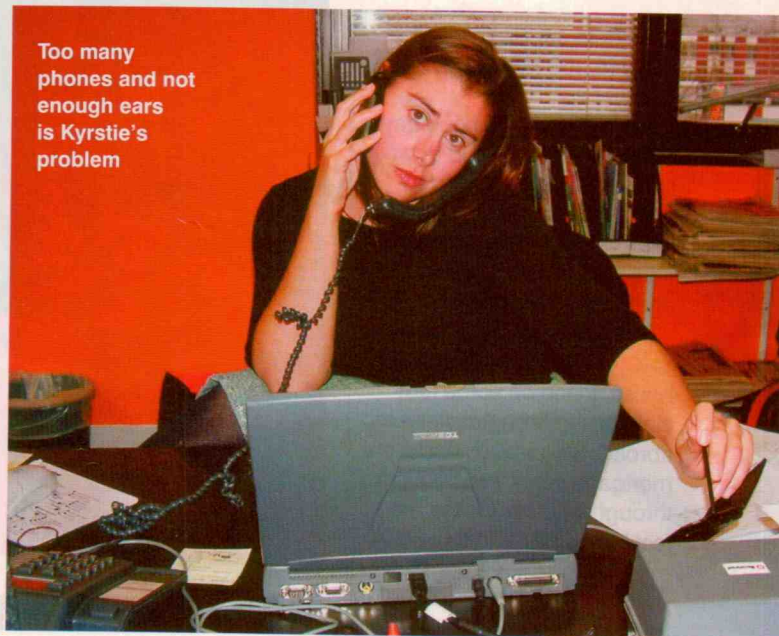
STRESS VERDICT

Dr Malcolm VandenBurg is a Harley Street physician who runs workshops for the stressed. 'Freida's heart should be producing 60-70 beats a minute. Instead, it's climbing above 90 – a sign she needs to slow down. She needs to swap that morning coffee for a good breakfast, switch off the TV, and persuade Rianna to do her own hair. She feels stressed throughout the day and her back pain is a symptom of this. A lot of women find motherhood more stressful than a career, as they feel less in control than they do at work and find the day-to-day chores unrewarding. I wonder if she could ask her ex-husband to share in the childcare? She could also cut down on some of the children's activities, as her chauffeur role causes so much stress it affects the whole family. Harry's bedtime tears are another symptom of Freida's bad day. She'd be a happier mum if she found herself a rewarding part-time job, and started and ended each day with some meditation.'

How I cope

When I step out in front of the audience, I think: "It's not brain surgery and they can't shoot me if I make a mistake!"

CHLOË MARCH, 34, from Godalming, Surrey, is a singer



Too many phones and not enough ears is Kyrstie's problem

THE PRESSURED PROFESSIONAL

KYRSTIE SUTCLIFFE, 34, works in London as an account director for a busy PR company. 'I've always been prone to stress. Even as a waitress, when I was a student, I'd worry after work that I'd served the wrong food! But I also thrive on the buzz of a high-pressure job, so I'm my own worst enemy.'

6.30am Wake up feeling very relaxed. **BP: 112/72 HR: 61.**

7.30am Wake up again, realising I've fallen asleep and will be late for work. I like to take the bus and be in the office at 8.45am, but will now have to catch a train and arrive later, at about 9.15am.
BP: 119/79 HR: 80.

8.45am Changing trains at Victoria Station. The platform is four or five people deep and I can't get through to a clear

space. Caught in a crush, with everyone pushing past me.
BP: 136/87 HR: 78.

9am Arrive at South Kensington, feeling fine and ready for my ten-minute walk to work. **BP: 144/80 HR: 87.**

10am Very excited this morning. A piece of coverage I arranged has appeared in a magazine. Feel great.
BP: 107/77 HR: 71.

11am Work's going well, but I'm feeling apprehensive as I've got to ring journalists about a new story and I've lots to do. **BP: 132/93 HR: 69.**

1.30pm Finally stop for lunch after a busy morning and hear mortgage interest rates are going up – I'm in the process of buying a new flat. I can afford the new rates but still feel anxious. The muscles in my shoulders are tight and my head feels foggy.
BP: 157/92 HR: 55.

3.30pm Feeling a post-lunch dip and I'm starting to panic about all I have to do today.
BP: 148/89 HR: 83.

4pm Despondent about not placing this new story. Now my

